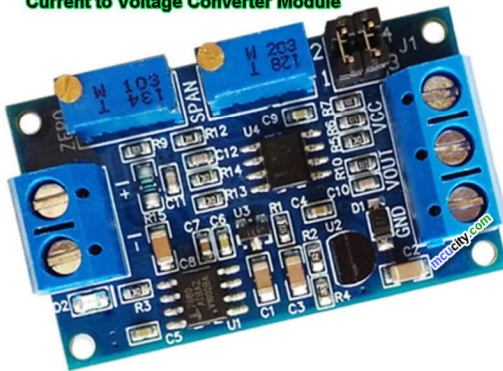


Module de tension 0/4-20ma à 0-3.3V 5V 10V, convertisseur de Signal de transmetteur de tension

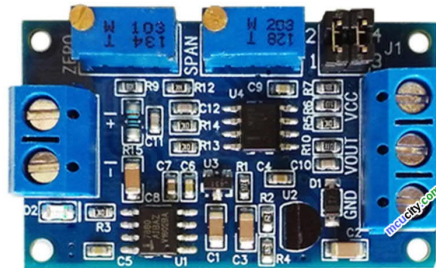
4-20mA to 0-3.3V/5V/10V

Current to Voltage Converter Module

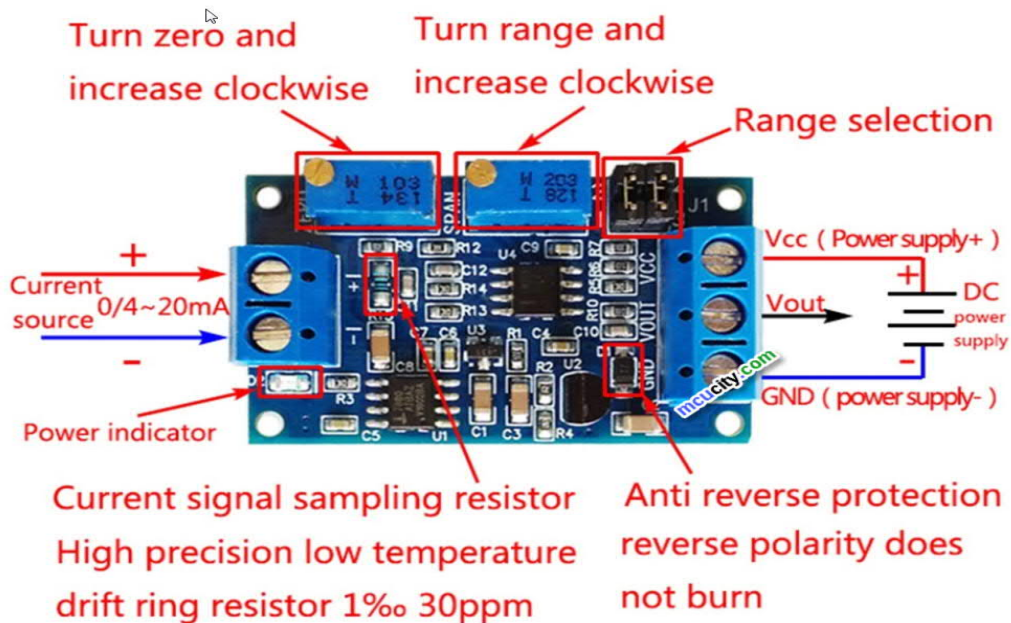


Current to turn voltage

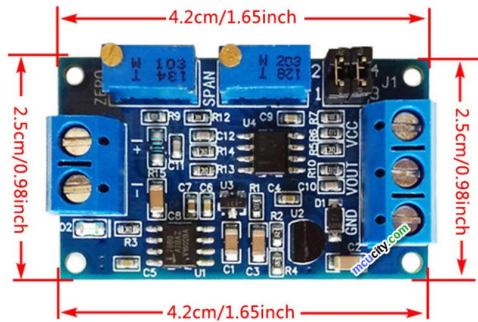
0/4 20mA turn 0 3.3V to 10V



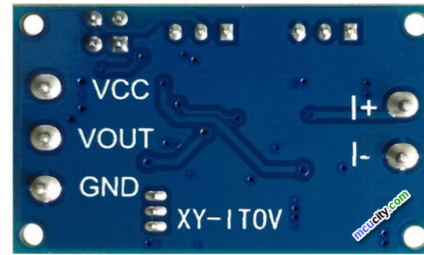
Industrial grade



↳



↳



Description:

In the process of circuit signal transmission, the voltage signal will increase with the transmission distance becomes weak, the use of current transmission can avoid the signal weakening. This module is used for the end of the current signal transmission, the signal into a voltage signal for single-chip detection. Current input support 4-20mA, 0-20mA, voltage output support 0-3.3V, 0-5V , 0-10V

Features:

Wide supply voltage range, the output voltage to support multiple ranges

Zero and range can be adjusted

High stability, good linearity, industrial grade

Current signal sampling resistor with high precision color ring resistance, high precision, temperature drift small, high power

Instructions for use:

- Module according to the definition of wiring, power supply voltage 7-36V
(if the output to 10V, the supply voltage must be greater than 12V)
- After power-up, the D2 indicator should be on, otherwise check the line connection.
Board with reverse protection, reverse does not burn.
- When the current input is the minimum (0mA or 4mA), adjust the ZERO potentiometer so that the VOUT output is the minimum (0.0V or other voltage)
- When the current input is at maximum (20mA), adjust the SPAN potentiometer so that the VOUT output is the maximum (3.3V or 5V or 10V, the output can be as low as 2.5V when the input is 4-20mA)

According to your needs, through the jumper cap to select the appropriate range:

(ON) = Close Jumper

(OFF) = Open Jumper

Range: 4->20mA:

0->2.5V range: [J1] = 1,2 (ON), 3,4 (ON)

0->3.3V range: [J1] = 1,2 (OFF), 3,4 (OFF)

0->5.0V range: [J1] = 1,2 (ON), 3,4 (ON)

0->10.0V range: [J1] = 1,2 (ON), 3,4 (OFF)

0-20mA:

0->-3.3V range: [J1] = 1,2 (ON), 3,4 (ON)

0->-5.0V range: [J1] = 1,2 (ON), 3,4 (ON)

0->-10.0V range: [J1] = 1,2 (ON), 3,4 (OFF)

Size: 4.2x2.5cm/1.65x0.98inch

Quantity: 1 Pc

Note:

Please allow 1-3mm error due to manual measurement. pls make sure you do not mind before you bid

Due to the difference between different monitors, the picture may not reflect the actual color of the item. Thank you!

Package Contents:

1 Pc x Current To Voltage Module